



Table of Contents

- 1. FILTRATION EQUIPMENT AND ITS PARTS 3
- 2. INTRODUCTION 3
- 3. WATER PRODUCTION PROCESS 4
- 4. COMPONENTS OF THE TEAM 5
- 5. TECHNICAL SPECIFICATIONS 6
- 6. BEFORE STARTING 7
- 7. INSTALLATION 7
- 8. TECHNICAL SPECIFICATIONS 9
- 9. SAFETY INSTRUCTIONS 9
- 10. PROBLEM GUIDE 10

1. FILTRATION EQUIPMENT AND ITS PARTS

Read all instructions before installing and using the PURIKOR Filtration System. We are sure that you will be satisfied with the operation of this equipment that will provide you with clean and safe water to drink. If you require more information or service about this product please contact your local PURIKOR dealer or visit our website: www.purikor.com

Filtration equipment — 1 unit

Filter holder wrench — 1 unit

1.5 meter food grade hose

Goose wrench — 1 unit

“T” connection — 1 unit

Supply valve — 1 unit

Installation manual — 1 unit

2. INTRODUCTION

This PURIKOR equipment uses techniques to deliver healthy, good-tasting water. By purchasing this equipment, you have taken the first step towards having cleaner, better-tasting water at a low cost. Teams that consist of 1, 2 or 3 stages

1. Model PKF-1/T (Single Stage)

Block CTO Activated Carbon Filter: Removes chlorine, organics, odor, flavor, turbidity, etc.

2. Model PKF-2 (Two stages):

Stage 1: Polypropylene Sediment Filter: Removes particles, dust, soil, etc.

Stage 2: Activated Carbon Filter in Block CTO: Removes chlorine, organics, odor, flavor, turbidity, etc.

3. Model PKF-3UV (Three stages)

Stage 1: Polypropylene Sediment Filter: Removes particles, dust, soil, etc.

Stage 2: Activated Carbon Filter in Block CTO: Removes chlorine, organics, odor, flavor, turbidity, etc.

Stage 3: Ultraviolet Light: Sterilizes bacteria, viruses and microorganisms in water.

3. WATER PRODUCTION PROCESS

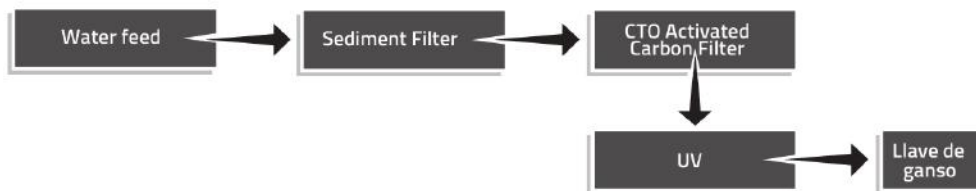
1. Model PKF-1/T (Single Stage)



2. Model PKF-2 (Two stages):



3. Model PKF-3UV

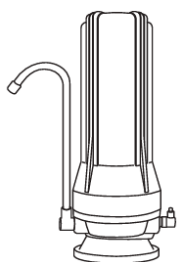


4. COMPONENTS OF THE TEAM

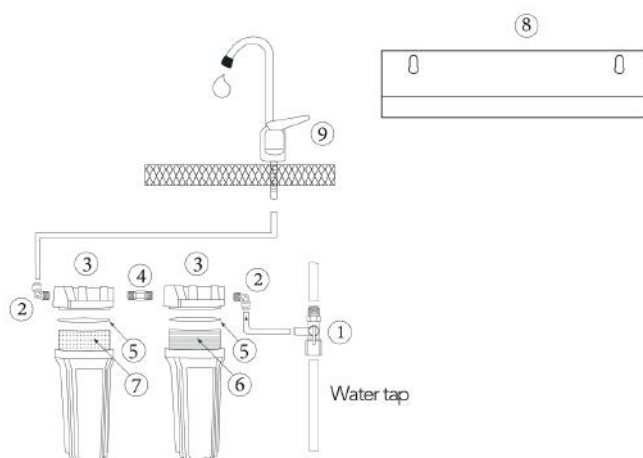
Review the components of the equipment according to the model you purchased.

1. Model PKF-1/T (Single Stage)

1. Water supply valve
2. "T" connector
3. Block CTO Activated Carbon Filter
4. Goose wrench



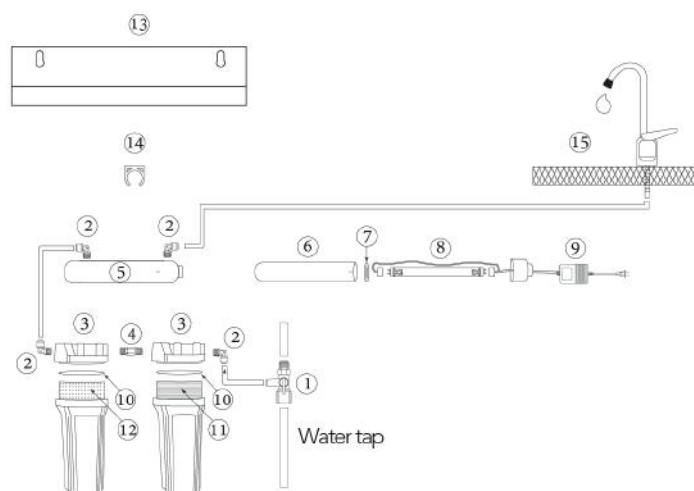
Model PKF-2 (Two Stages):



	DESCRIPTION.	VDE CODE.
1	PLASTIC WATER SUPPLY CONNECTION VALVE 1/2X1/2X1/4	R-PKMFV-01
2	MALE "L" ELBOW ADAPTER (T1/4", RM1/4")	R-PK-DCC-002A
3	WHITE FILTER HOUSING 10X.25 WITHOUT VENT	PKPFB10X.25
4	NIPPLE CONNECTION 1/4 X 1/4	R-PK-M22
5	O-RING FOR FILTER HOUSING 2.5" DIAMETER	O-RING FOR FILTER HOUSING 2.5" DIAMETER
6	POLYPROPYLENE CARTRIDGE 10X2.5" 5 MICRON	PKCPP2.5X10X5

7	ACTIVATED CARBON CTO CARTRIDGE 10X2.5" 5 MICRON	PKCCT02.5X10X5
8	BRACKET FOR PKUF-5	R-PK-BRAF-2
9	GOOSENECK FAUCET, CHROME-PLATED WITH PLASTIC HANDLE	R-PK-GF01C

3. Modelo PKF-3UV



	DESCRIPTION	VDE CODE.
1	PLASTIC WATER SUPPLY CONNECTION VALVE 1/2"X1/2"X1/4"	R-PKMFV-01
2	MALE "L" ELBOW ADAPTER (T1/4", RM1/4")	R-PK-DCC-002A
3	WHITE FILTER HOUSING 10X.25 WITHOUT VENT	PKPFB10X.25
4	NIPPLE CONNECTION 1/4" X 1/4"	R-PK-M22
5	STAINLESS STEEL CHAMBER FOR 6W UV LAMP	R-PK-GABINETEUV
6	QUARTZ SLEEVE FOR UV LAMP	R-PK-UVMC-6W
7	O-RING FOR 6W UV LAMP OS/UF/FB	R-PK-ORINGUV6W
8	PHILIPS 6-WATT LAMP	R-PK-UV-6W
9	POWER ADAPTER FOR UV-6 LAMP	R-PK-ADAPTADORUV
10	O-RING FOR 2.5" FILTER HOUSING	R-PK-ORINGPF
11	POLYPROPYLENE CARTRIDGE 10X2.5" 5 MICRON	PKCPP2.5X10X5
12	ACTIVATED CARBON CTO CARTRIDGE 10X2.5" 5 MICRON	PKCCT02.5X10X5
13	BRACKET FOR PKUF-5	R-PK-BRAF-2
14	HOLDER FOR STAINLESS STEEL CHAMBER	R-PK-CL-06
15	GOOSENECK FAUCET, CHROME-PLATED WITH PLASTIC HANDLE	R-PK-GF01C

5. TECHNICAL SPECIFICATIONS

Feed water: Municipal network

Chlorine Level: 0.2 parts per million

Inlet pressure (min./max.): 14.5 — 43.5 psi

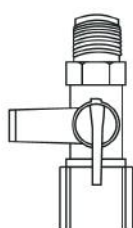
Inlet temperature (min./max.): 4°C — 38°C

6. BEFORE STARTING

- Read all instructions before starting to use the PURIKOR Filtration System. Follow all the steps or you may be at risk of damage to the equipment.
- This PURIKOR equipment has filters that need to be replaced from time to time. The time to change filters varies depending on the use and quality of the water being supplied. For more details, please contact your PURIKOR dealer
- Install the equipment with drinking water. In places where the water is not drinkable, the equipment may not work properly and require some pre-treatment of water.
- Make sure the water pressure is between 14.5 and 43.5 psi. If the pressure exceeds the maximum pressure, we recommend placing a pressure reducing valve.
- The water temperature should be between 5°C and 38°C. The equipment will not work well if these temperatures are exceeded. **DO NOT INSTALL THE EQUIPMENT IN THE HOT WATER CONNECTION.**
- Do not use the PURIKOR system if you realize that it has been used with wastewater or water that may have some contamination.

7. INSTALLATION

Follow the instructions to install the water supply faucet. The water supply should be as close as possible to the filter. Install the water supply faucet. Install the “T” connector and connect it to the water supply. Caution: The feed water must be from the cold water line. Note: Use only cold drinking water as food. Hot water would damage your filter. Softened water could extend the life of filters



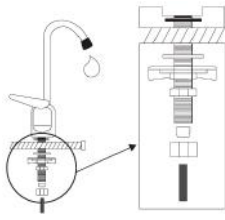
Quick “tubing” connection: Review the following diagram for proper installation of quick connections.

To install “tubing” water hose 1. Insert line 2. Insert clip 3. Full installation

To remove “tubing” water hose 1. Remove clip 2. Press the inner nail 3. Pull the tubing hose

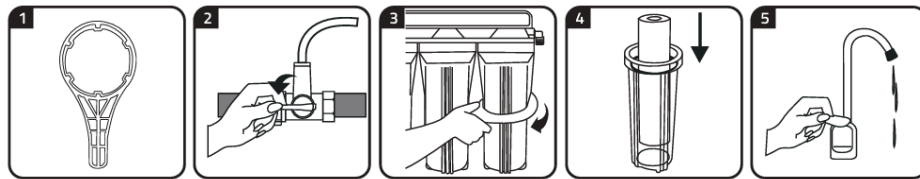
Goose wrench installation for PKF-2 and PKF-3UV models:

- Select a connection near your sink to place the goose faucet. It can be on the right or left side.
- Drill a 12mm diameter hole in the top of the cover next to the sink.
- Place the goose wrench and its connections according to the diagram and tighten the lower nut tightly.



Installing filters:

- Remove the filter cartridges from the packaging.
- Place the filters in the filter holders according to the labels and close the filter holders from right to left in the following order: Sediment Filter and Block Activated Carbon Filter (CTO).

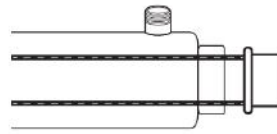


UV lamp installation for model PKF-3UV (three stages).

1. UV camera or housing
2. Glass sleeve
3. Aluminum nut
4. Silicone cap
5. Silicone packaging
6. UV lamp
7. Adaptor

STEP 1: Place the silicone stopper or silicone gasket (4 or 5) on the tip of the glass sleeve (2).

STEP 2: Insert the glass sleeve (2) into the UV chamber (1).



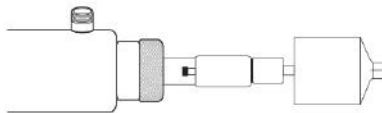
STEP 3: Adjust the aluminum nut (3) to seal the UV chamber (1).



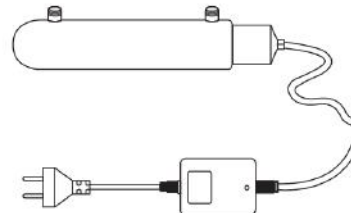
STEP 4: Connect the adapter (7) to the UV lamp (6).



STEP 5: Insert the UV lamp (6) into the stainless steel UV chamber (1).



STEP 6: Seal the chamber with the cover that is attached to the adapter (7) See Figure 6.



CAUTION: Do not look at the ultraviolet light without protection, as the rays emitted by the UV lamp can cause serious burns to the eyes and skin. Always disconnect the electronic ballast when performing maintenance on the equipment.

8. TECHNICAL SPECIFICATIONS

Model	PURIKOR Code	Frequency of change
Sediment Filter	PKCPP2.5X10X5	3 to 6 months or when you notice any loss in performance.
Block Activated Carbon Filter (CTO)	PKCCTO2.5X10X5	6 to 12 months or when you notice a loss in performance.
Lamp UV Light	R-PK-UV-6W	12 months or sooner if it stops working (it's important to keep the glass sleeve clean).

9. SAFETY INSTRUCTIONS

These PURIKOR equipment must operate and operate in accordance with the instructions in this manual. It is not designed to operate outside of the above specifications and any attempt to do so may cause damage to the unit or person. Keep the PURIKOR equipment out of the reach of children. If your PURIKOR equipment requires service or repair please contact your local dealer or visit www.purikor.com

- Make sure that the temperature of the supplied water is higher than 4°C and lower than 38°C.
- The power supply voltage should be 115 volts for equipment that includes UV light. Incorrect voltage may damage the unit and/or cause a fire
- Do not attempt to use the unit if the power supply cable is damaged as this may cause electric shock or fire. If the electrical cable is damaged, disconnect the equipment and discontinue use until repaired.

10. PROBLEM GUIDE

Problem	Cause	Solution
Does not produce water	The water supply is closed.	Open the water supply.
Not enough water product	1. The water supply is blocked	1. Clear restriction.
	2. Pre filter (s) are clogged.	2. Replace the filters.
	3. Water supply valve is clogged or closed	3. Open the valve or unplug it.
Abnormal noise cycle	Clogged filter or low water supply pressure.	Change the filter or adjust the water supply pressure.
Water with an unpleasant taste or smell	Activated Carbon Filter out of stock.	Change Activated Carbon Filter.
Fuga	1. Tubing is not well tightened or connected	1. Tighten or adjust pipe connections
	2. Faulty or damaged piping	2. Cut off damaged area of the pipe or replace the
	3. Packings ("O" ring) are not properly placed.	3. Place packaging ("O" ring) properly
	4. Damaged packing ("O" ring)	4. Replace gaskets ("O" ring)
UV light does not turn on	1. Damaged lamp.	1. Replace the lamp.
	2. It's not well connected.	2. Make sure it has an electrical current and connect