

PRESSURE GAUGES

ACCESORIES

» TECHNICAL DATA SHEET

Certified in accordance with
NOM-013-SCFI-2004





PRESSURE GAUGES - CHARACTERISTICS

ALTAMIRA pressure gauges are built to measure different pressure ranges and can be used with air, water, and non-corrosive liquids.



» APPLICATIONS

- Hydropneumatic systems.
- High-pressure applications.
- Water treatment systems.

» ADVANTAGES

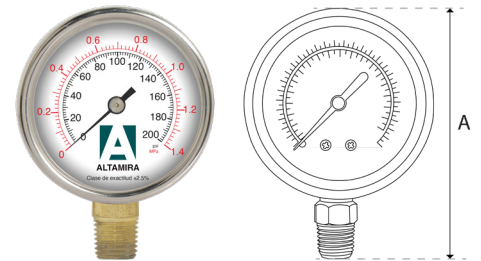
- 304 stainless steel case.
- Bronze or 316 stainless steel connection.
- Aluminum dial and pointer with dual pressure scale (psi and kg/cm²).

» TECHNICAL SPECS

Accuracy:	1.6% – 2.5%
Operating temperature:	-4 - 140 °F
Connection:	¼" NPT Male
Ingress protection:	IP67

BOTTOM CONNECTION

GTIN-13 (E-COMMERCE CODE)	MODEL	PRESSURE RANGE (psi)	GAUGE TYPE	DIAL SIZE (in)	DIMENSIONS (in)		WEIGHT (Lb)
					A	B	
7503052777133	MAN0-100SS	0 - 100	Dry	2	2.75	1.14	0.2
7503052777164	MAN0-200SS	0 - 200					
7503052777096	MAN0-30G	0 - 30					
7503052777102	MAN0-60G	0 - 60	Liquid-filled (glycerin)	2.5	3.60	1.14	0.4
7503052777119	MAN0-100G	0 - 100					0.4
7503052777140	MAN0-200G	0 - 200					0.4
7503052777171	MAN0-200G4	0 - 200					
7503052777195	MAN0-400G4	0 - 400		4	5.28	1.38	1.1
7503052777225	MAN0-3000G	0 - 3 000		2.5	3.62	1.14	0.4
7503052777249	MAN0-6000G	0 - 6 000					
7503052777201	MAN0-1500SSG	0 - 1 500					
7503052777270	MAN0-3000SSG	0 - 3 000					



BACK CONNECTION

GTIN-13 (E-COMMERCE CODE)	MODEL	PRESSURE RANGE (psi)	GAUGE TYPE	DIAL SIZE (in)	DIMENSIONS (in)		WEIGHT (Lb)
					A	B	
7503052777126	MAN0-100GBM	0 - 100	Liquid-filled (glycerin)	2.5	2.64	2.28	0.4
7503052777157	MAN0-200GBM	0 - 200					
7503052777188	MAN0-300GBM	0 - 300					
7503052777232	MAN0-3000GBM	0 - 3 000					
7503052777256	MAN0-6000GBM	0 - 6 000					
7503052777218	MAN0-1500SSGBM	0 - 1 500					
7503052777287	MAN0-3000SSGBM	0 - 3 000					

